



MONTHLY MEMBERSHIP PROGRESS REPORT

District 13 OH3

Results as of: 4/30/2017

GMT: Cindy Gregg

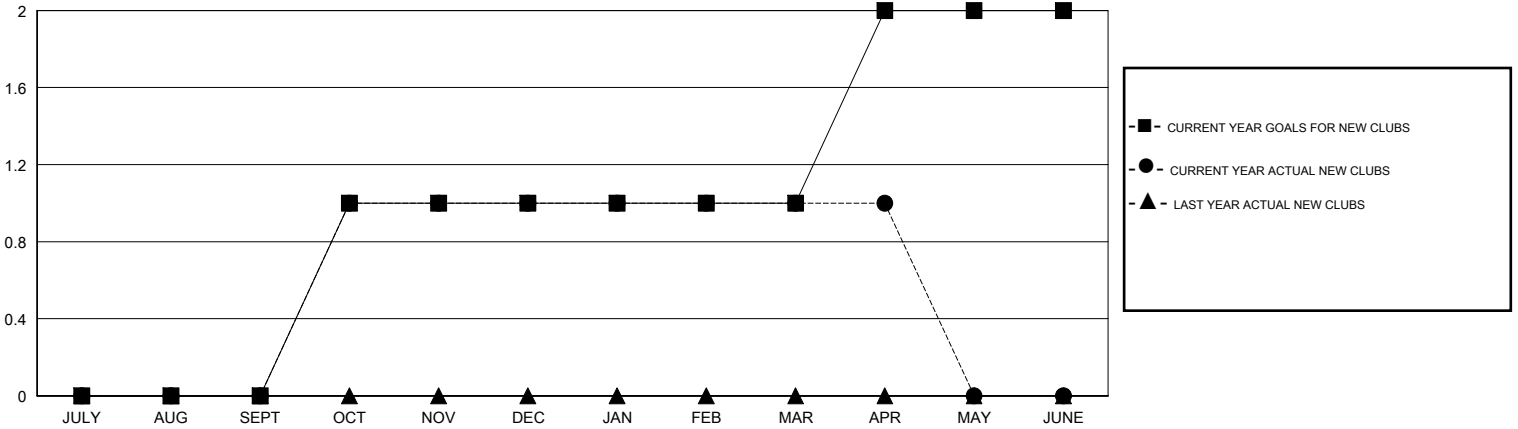
LOCATION OHIO

GMT CA

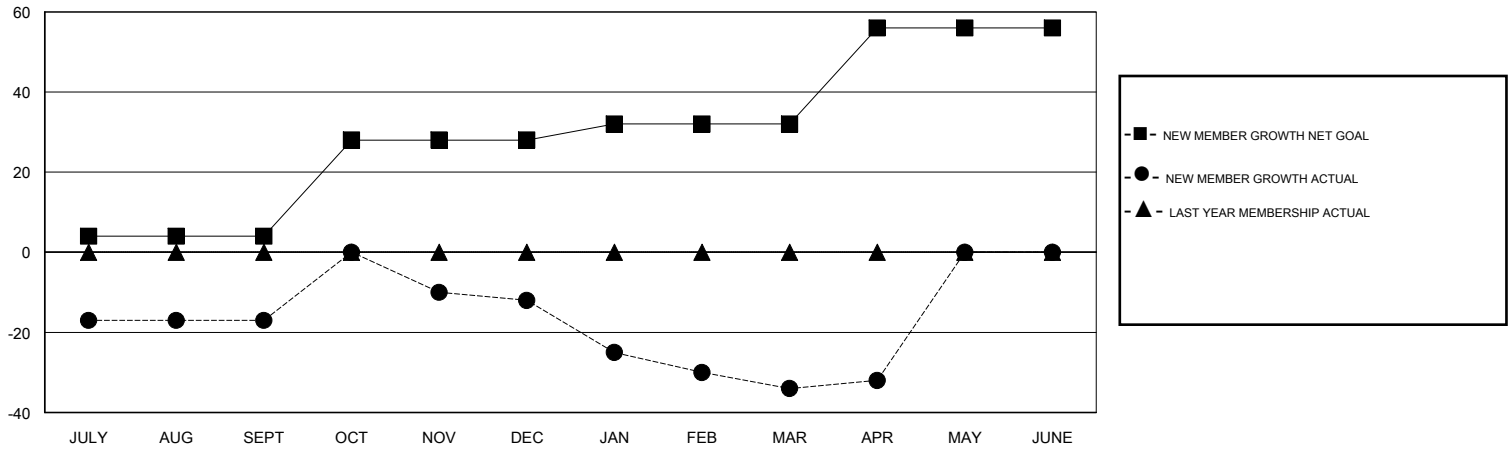
Clubs			
RESULTS FOR 2016-2017			
QUARTER	NEW CLUB GOAL	NEW CLUBS	DROPPED CLUBS
JULY/AUG/SEPT	0	0	0
OCT/NOV/DEC	1	1	0
JAN/FEB/MAR	0	0	0
APR/MAY/JUNE	1	0	0

Members			
RESULTS FOR 2016-2017			
QUARTER	NEW MEMBER GROWTH NET GOAL (not reinstated or transfers)	NEW MEMBER GROWTH ACTUAL (not reinstated or transfers)	DROPPED MEMBERS ACTUAL (including transfers)
JULY/AUG/SEPT	4	21	38
OCT/NOV/DEC	24	71	67
JAN/FEB/MAR	4	42	64
APR/MAY/JUNE	24	14	12

GOALS AND ACTUAL NEW CLUBS CUMULATIVE



GOALS AND ACTUAL MEMBERS CUMULATIVE



DROPPED CLUBS: 0	35 CLUBS OF 63 ADDED 1 OR MORE NEW MEMBERS	<u>GENDER DISTRIBUTION</u>	
DROPPED MEMBERS		MALE	1,148 (67.29%)
DECEASED	20	FEMALE	558 (32.71%)
CLUB CANCELLED	0	TOTAL FAMILY UNIT MEMBERS	
OTHER	159	313	
TOTAL	179	FAMILY MEMBERS PAYING HALF DUES	
		161	

[CLICK HERE FOR CUMULATIVE MEMBERSHIP DATA](#)